

M-120E

Auto Label Mounting Machine



规格参数

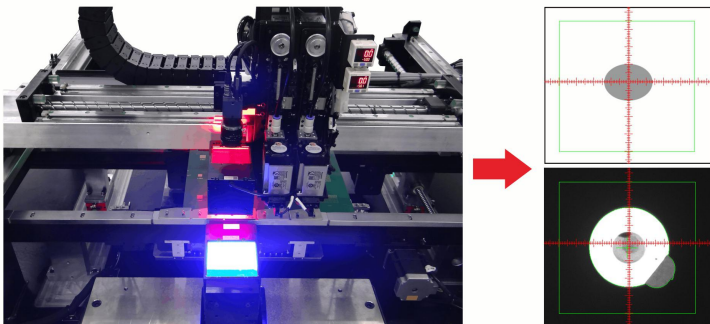
性能Performance		
重复定位精度(@6 Sigma Cpk ≥ 2.0)	Repeat Position Accuracy(@6 Sigma Cpk ≥ 2.0)	±0.005mm(激光干涉仪数据)
贴装精度(@6 Sigma, Cpk≥2.0)	Placement Accuracy(@6 Sigma, Cpk≥2.0)	±0.1mm(不含来料偏差)
贴装效率	Efficiency	MAX:2500点/H,或1.2s/pcs
吸嘴个数	The number of suction nozzle	2pcs
供料器个数	Number of feeder	2pcs
贴装参数 parameter		
载板尺寸	Carrier board size	min:100*100*1mm,max:400*400*10mm
供料器宽度	Feeder width	60mm,80mm,100mm
吸嘴间距	Suction nozzle spacing	50mm
轨道段数	Track number	1
运输方向	Transport Direction	L to R ,R to L
夹板方式	Plywood method	cylinder clip
载具方式	Vehicle mode	bare PCB , fixture
接驳高度	Connection height	行业标准900±20mm Industry standard 900±20mm
连机信号	Connected signal	行业标准14pin SMEMA接头 Industry standard 14pin SMEMA connector
贴装参数 parameter		
上相机	camera	500W工业相机 Industrial Camera
上镜头	CCD	25mm变焦镜头zoom lens
上光源	Upper light source	60同轴红光 coaxial red light
成像视野	Imaging field of view	50*40mm
下相机	Lower camera	500W工业相机 Industrial Camera
下镜头	Lower lens	25mm变焦镜头 zoom lens
下光源	Lower light source	70 coaxial light source
成像视野	Imaging field of view	60*50mm
运行环境 Operating environment		
电源	Power Source	AC:220±10%,50/60HZ 1Φ 2.5KW
气源	Air Pressure	压缩空气, 0.6±0.1Mpa
工作环境温度	Operation Temperature	26±5°C
工作环境湿度	Operation Humidity	RH30-60%
设备重量	Machine Weight	1000Kg
设备外观尺寸	Approximate Dimensions	
操作系统	Operation System	win7 windows 10
声噪声级	Acoustic Noise Level	小于87dB Less than 87dB
设备功能 Device function		
操作账户	Operating account	三阶 (Third order) : operator-engineer-administrator
加密类型	Encryption type	加密狗Dongle
MARK类型	MARK type	支持多个 Irregular contour features, standard shape features
MARK个数	MARK number	支持多个 multiple
BadMark功能	function	支持BadMark自动跳过Support BadMark auto skip
F点纠偏	F point correction	贴装前识别被贴特征Identify the attached features before mounting
取料视觉定位	Retrieval visual positioning	支持取料时位置和角度识别Support position and angle identification when picking
贴装软着陆	Placement soft landing	贴装软着陆Placement soft landing
标定类型	Calibration type	像素比标定, 吸嘴旋转中心标定, 吸嘴相对相机中心标定 Pixel ratio calibration, nozzle rotation center calibration, nozzle calibration relative to camera center
拍照方式	Photographing method	上相机定拍, 下相机飞拍 Shoot on the camera and fly on the camera
CPK测量方式	CPK measurement method	菲林片自动测量Film automatic measurement
供料器类型	Feeder type	卷料飞达, 振动盘, 滑台 Coil feeder, vibrating disk, sliding table Tray
MES功能	MES function	预留接口, 针对客户需求开发 Reserved interface, developed according to customer needs

标配 Standard

提供更高贴装品质 High precision pick & place Quality

双视觉定位系统

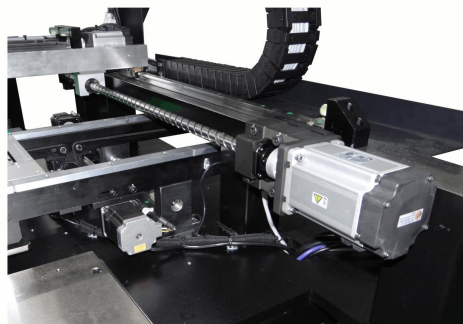
Dual vision positioning system



120E贴装机采用双视觉定位系统（上相机识别定位产品，下相机识别定位材料），经过视觉对位计算XYR偏差运动控制进行补偿，从而实现精准贴装作业。通过灵活的视觉方案可针对任意形状进行轮廓识别，增强贴装设备的泛用性。HM-120E placement machine adopts a dual vision positioning system (upper camera recognizes and locates products, lower camera recognizes and locates materials), through visual alignment calculation XYR deviation motion control to compensate, so as to achieve precise placement operations. Contour recognition can be performed for any shape through a flexible vision scheme, which enhances the versatility of placement equipment.

伺服电机+精密丝杆运动系统

Servo motor + precision screw motion system



X.Y轴由伺服电机控制丝杆运动、精度高、速度快，效率得到保障。

The X.Y axis is controlled by the servo motor to move the screw rod. The precision is high. The speed is fast and the efficiency is guaranteed.

提升产能及直通率 More Reliability & Efficiency

一体式焊接机架

Integrated welding frame

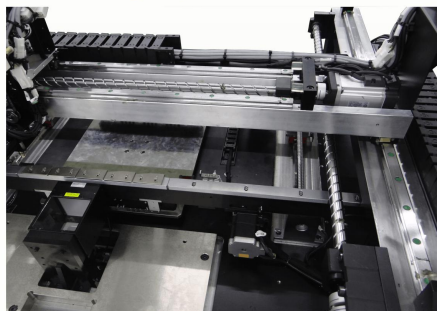


采用一体式焊接机架，结构稳固，保证设备持续运行稳定。

The integrated welding frame is stable and the structure is stable to ensure the continuous operation of the equipment.

滚珠丝杆XY龙门结构

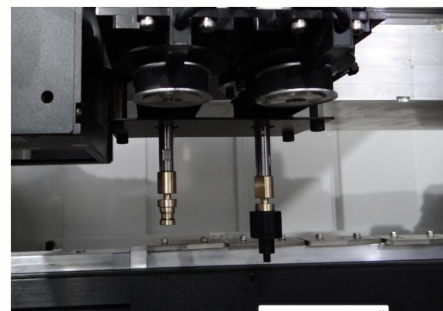
Ball screw XY gantry structure



由精密滚珠丝杆+运输导轨构成的XY龙门，更加灵活的作业方式，有效作业区域400*400mm。The XY gantry composed of precision ball screw + transportation guide, more flexible operation mode, effective operation area 400*400mm

独立升降旋转的阵列式贴装头模组

Independent lifting and rotating array type mounting head module



贴装头吸嘴独立的ZR轴，可同时实现升降和旋转，保证贴装精度和效率。

The independent ZR axis of the nozzle of the placement head can realize lifting and rotation at the same time to ensure placement accuracy and efficiency.

快速拔插的供料器

Quick-plug feeder



模组化的供料器，方便快速换料和维修保养。Modular feeder, convenient for quick material change and maintenance.

旋转式电控箱

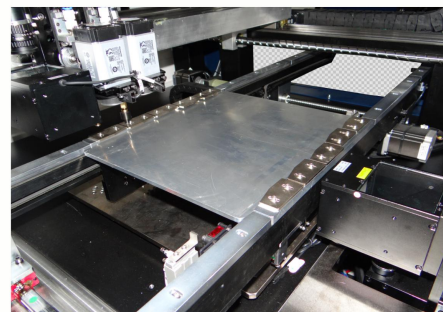
Rotating electric control box



旋转设计将伺服驱动和电控箱分开安装，避免强弱电干扰，方便检修。The rotating design separates the servo drive and the electric control box to avoid strong and weak electric interference and facilitates maintenance.

一段式自动调宽轨道+顶升平台

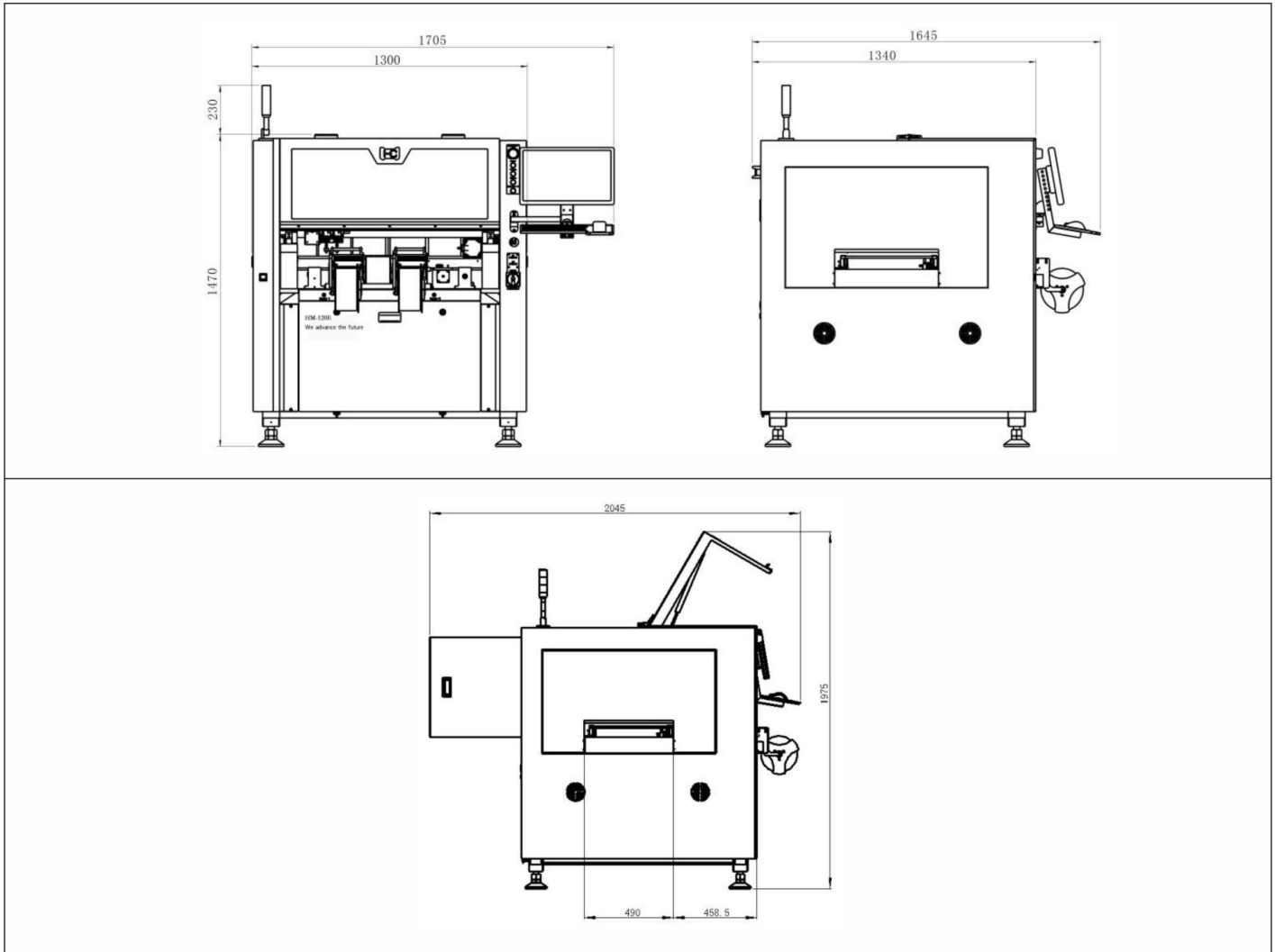
One-stage automatic widening track + jacking platform



轨道宽度通过软件标定，输入宽度后自动调整，小平台支持顶针。

The track width is calibrated by the software, and it is automatically adjusted after the width is entered. The small platform supports thimble.

产品尺寸 Size



* 产品说明文字、图样及技术参数随技术发展而更改，恕不事先通告，敬请谅解。
Product description text, drawings and technical parameters are subject to change with the development of technology without prior notice, please understand.



www.smthelp.com